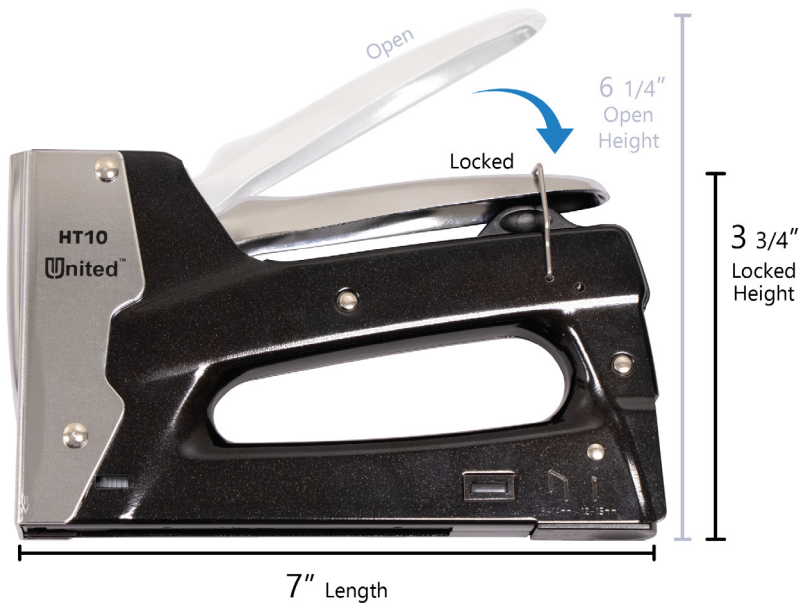


United

Affordable Today.
Reliable Tomorrow.



HT10

Multi-Purpose Metal Staple Gun

United's HT10 Multi-Purpose Metal Staple Gun is designed for accuracy, durability and safety. This heavy-duty 2-in-1 staple gun can be used with staples and brads, eliminating the need for two tools and saving space. The HT10 allows for a powerful and a consistent staple every time, and features a refill window to easily see when it needs reloading.

The HT10 is constructed with a rugged metal body, and an easy squeeze mechanism that uses 40% less force — perfect for construction sites, contractors, builders, shipping warehouses, and big at-home projects.



Accurate



Affordable



Durable

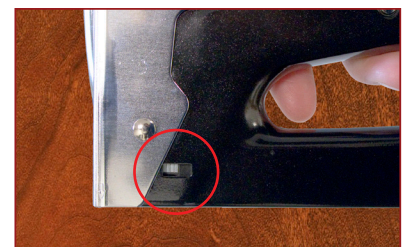
www.UnitedOfficeNow.com
1-800-550-3683



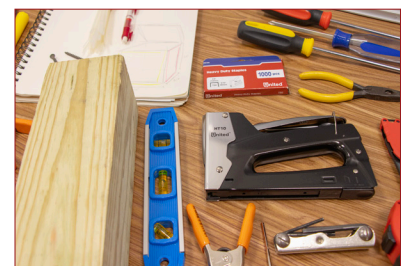
✓ Easy Squeeze Mechanism - up to 40% Less Force Required



✓ Takes Staples & Brads



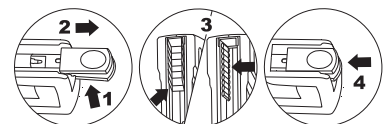
✓ Refill Staple Window



✓ Heavy-Duty Metal

How to load staples:

- 1 2 Squeeze and pull latch
- 3 Load staples/brads on left side
- 4 Close bottom channel



Staple Size	1/4"-9/16":T50
Brad Size	1/2"-5/8": 18 Gauge
Dimensions	Handle Up: 7.0" L x 6.25" H Handle Down: 7.0" L x 3.75" H
Weight	1.41 lbs